



The following information comprises the minutes for a special meeting of the City Council, a joint meeting of the Banning City Council and Banning Utility Authority and a joint meeting of the Banning City Council and the Banning City Council sitting in its capacity as the Successor Agency Board.

**MINUTES
CITY COUNCIL**

**12/12/2023
SPECIAL MEETING**

COUNCIL MEMBERS PRESENT: Council Member Sheri Flynn
Council Member Reuben Gonzales* *Arrived at 4:57 p.m.*
Council Member Rick Minjares
Mayor Alberto Sanchez
Mayor Pro Tem Colleen Wallace

COUNCIL MEMBERS ABSENT: None

OTHERS PRESENT: Doug Schulze, City Manager
Serita Young, City Attorney
Marie Calderon, City Clerk
Caroline Patton, Administrative City Clerk
Art Vela, Director of Public Works
Nate Smith, Deputy Director of Public Works

1. CALL TO ORDER

Mayor Sanchez called the special meeting to order at 4:31 p.m.

1.1 Roll Call

COUNCIL MEMBER	PRESENT:	ABSENT
Flynn, Sheri	X	
Gonzales, Reuben*	X	
Minjares, Rick	X	
Sanchez, Alberto	X	
Wallace, Colleen	X	

**Arrived at 4:57 p.m.*

2. PUBLIC COMMENT – Agenda Items

None

3. WORKSHOP

3.1. Discussion Regarding California's Making Conservation a California Way of Life Proposed Regulatory Text


Art Vela, Director of Public Works, presented the staff report.

Jazmine Molloy, Consultant, presented to City Council.

4. ADJOURNMENT

The Special City Council meeting adjourned at 5:38 p.m.

Minutes Prepared by:


Caroline Patton, Administrative City Clerk

*These minutes have been prepared as **Action Minutes** in accordance with City Council Resolution 1995-21 and Government Code Sections 36814, 40801, and 54953(c)(2).*

This entire meeting and all associated documents may be viewed here:
<http://banning.ca.us/755/Agendas-and-Minutes---2024-to-Present>

ATTACHMENTS:

Exhibit A – Agenda Item 3.1: Staff Presentation

Exhibit A

CITY OF BANNING

LEGISLATIVE OVERVIEW



JAZMINE MOLLOY

*DIRECTOR OF PRODUCT
DEVELOPMENT*

SB 606 & AB 1668

How Did We Get Here...



2016

- Governor Brown Issued Executive Order B-37-16 entitled "Making Conservation A California Way of Life"

2018

- Implementation Legislation: Senate Bill 606/Assembly Bill 1668
- Making Conservation A California Way of Life Primer Released



2022

- DWR recommendations released

2023

- Draft regulation from SWRCB released

MAKING WATER CONSERVATION A CALIFORNIA WAY OF LIFE

Primer of 2018 Legislation on Water Conservation and Drought Planning
Senate Bill 606 (Hertzberg) and Assembly Bill 1668 (Friedman)

PREPARED BY



California Department
of Water Resources

AND

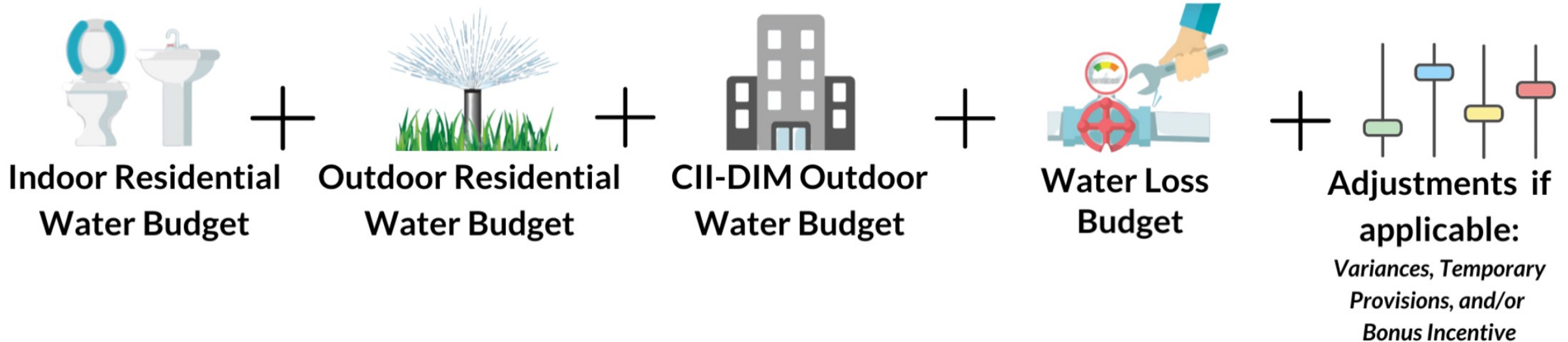


State Water Resources
Control Board

NOVEMBER 2018

Urban Water Use Objective

SB 606 & AB 1668 – *Making Conservation a California Way of Life*



Calculating the Urban Water Use Objective



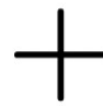
Indoor Residential
Water Budget



Outdoor Residential
Water Budget



CII-DIM Outdoor
Water Budget



Water Loss
Budget



Adjustments if
applicable:
*Variances, Temporary
Provisions, and/or
Bonus Incentive*

Residential **Indoor** Standard

Indoor Standard (GPCD)

x

Service Area Population

x

365 days

2020-2024: **55 GPCD**

2025-2029: **47 GPCD**

2030-onwards: **42 GPCD**

Incremental
Decrease



Residential **Outdoor** Standard

Supplier's Unique Climate

x

Amount of Landscape Area

x

Efficiency Factor

2023 – 2029 = **0.80 LEF**

2030 and 2034 = **0.63 LEF**

2035 onwards = **0.55 LEF**

Residential **Indoor** Standard

Indoor Standard (GPCD)

x

Service Area Population

x

365 days

2020-2024: **55 GPCD**

2025-2029: **47 GPCD**

2030-onwards: **42 GPCD**

Incremental
Decrease



Residential **Outdoor** Standard

Supplier's Unique Climate

x

Amount of Landscape Area

x

Efficiency Factor

2023 – 2029 = **0.80 LEF**

2030 and 2034 = **0.63 LEF**

2035 onwards = **0.55 LEF**

Residential **Indoor** Standard

Indoor Standard (GPCD)

x

Service Area Population

x

365 days

2020-2024: 55 GPCD

2025-2029: 47 GPCD

2030-onwards: 42 GPCD

Incremental
Decrease



Residential **Outdoor** Standard

Supplier's Unique Climate

x

Amount of Landscape Area

x

Efficiency Factor

2023 – 2029 = 0.80 LEF

2030 and 2034 = 0.63 LEF

2035 onwards = 0.55 LEF

LAM: Landscape Area Measurement

Landscape Area Measurement

Developed using 2018, 4 band (NIR) aerial imagery + county assessor supplied parcel data



DWR provided this data to all water suppliers

Residential Outdoor Standard

Outdoor Residential Water Budget (R_{outdoor}) =

$$\underset{\text{"Net ETo"}}{(E_{\text{To}} - P_{\text{eff}})} \times LA \times LEF \times 0.62$$

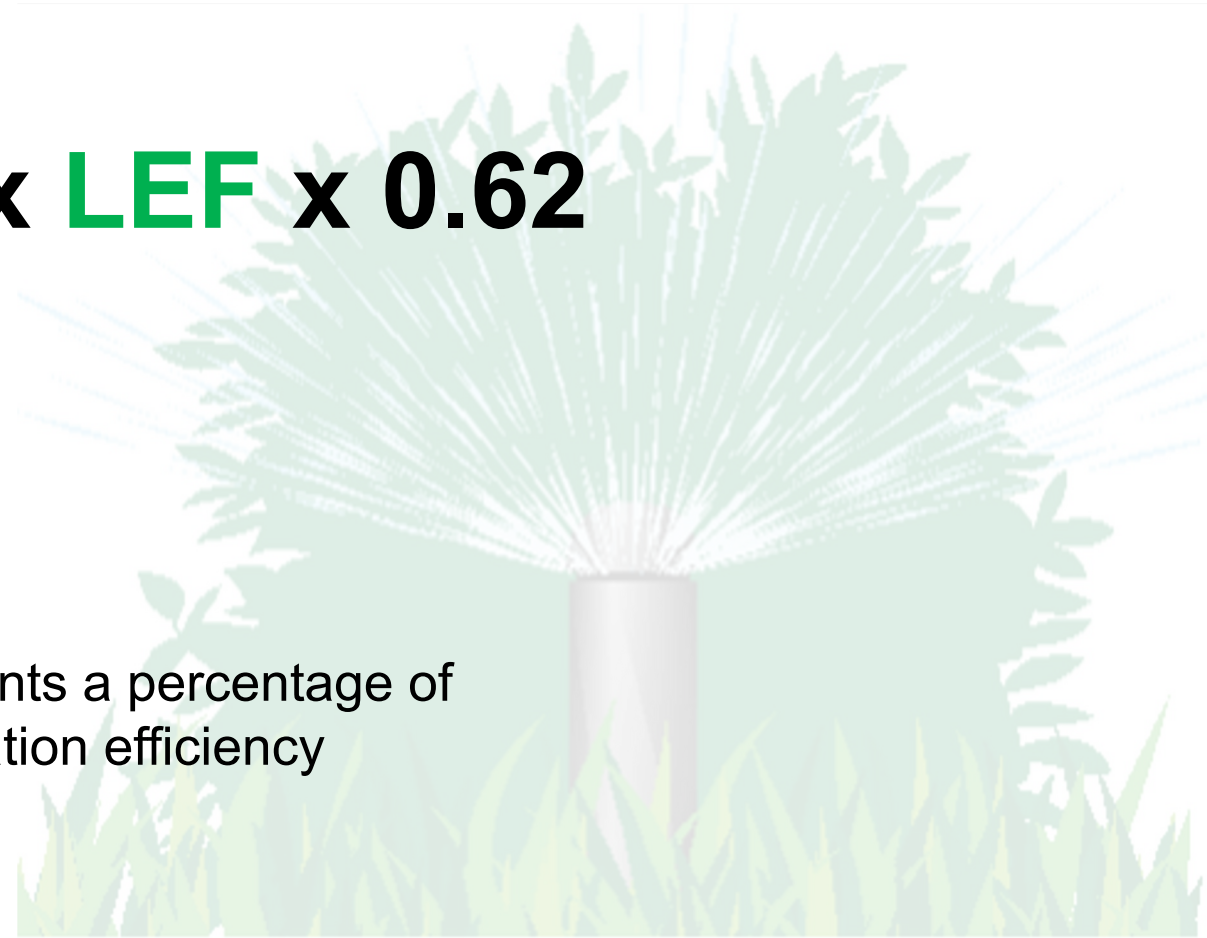
ETo = Reference evapotranspiration (inches)

Peff = Effective precipitation (inches)

LA = Landscape area for a water supplier (sq. ft)

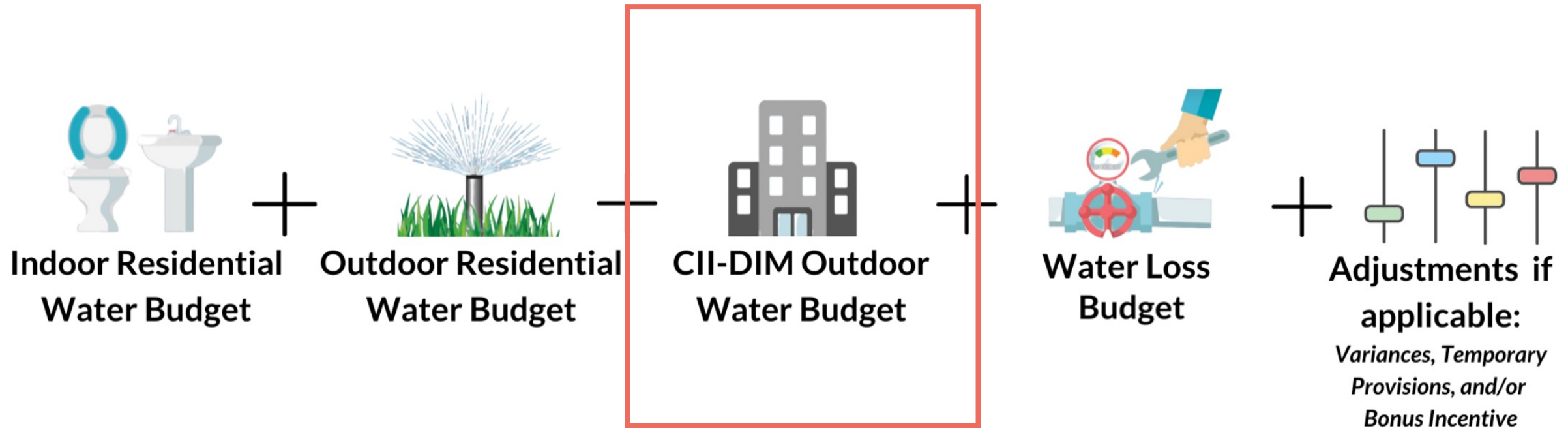
LEF = Landscape Efficiency Factor (unitless) represents a percentage of reference ETo; function of plants' water needs & irrigation efficiency

0.62 = unit conversion factor



Calculating the Urban Water Use Objective

Providers cannot exceed the SUM of the standards



CII Water Use Standard

Commercial, industrial and institutional accounts are separated into two different regulations:

1st: UWUO based on
Dedicated Irrigation Meters (DIM)

2nd: Performance Measures based on
Mixed Use Meters (MUM)

CII Outdoor DIM

$$((\text{DIM LA} - \text{DIM SLA}) \times \text{LEF}) + (\text{DIM SLA} \times 1.0) \times (\text{ETo-Peff}) \times 0.62$$

2023 – 2029 = 0.80 LEF

2030 – 2034 = 0.63 LEF

2035 onwards = 0.45 LEF

New Developments = 0.45

(or current MWELO ETAF value)

Incremental
Decrease



Special Landscape Areas (SLA) = 1.0 LEF

DWR Provides: CII Landscape Area



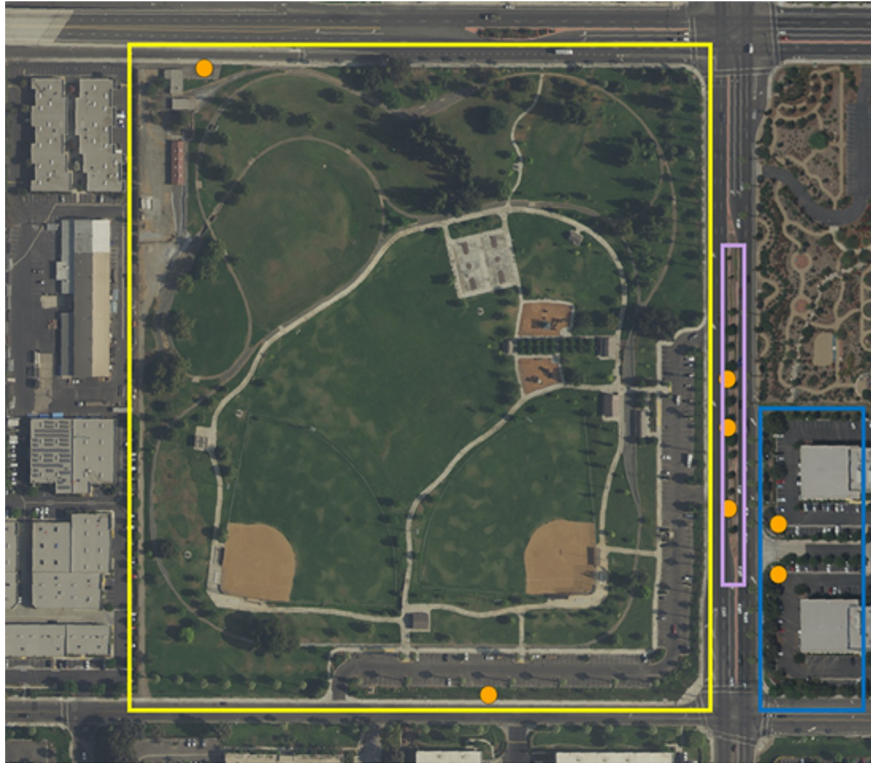
LUCD Classification

- Impervious
- Pools
- Irrigated Canopy
- Irrigated Turf/ Cover
- Irrigable Not Irrigated Canopy
- Irrigable Not Irrigated Turf/ Cover
- Not Irrigable Vegetation
- Undeveloped Lands
- Horse Corrals
- Open Water
- Artificial Turf
- Agricultural Lands
- Parcel Boundary



- Non-Functional Turf
- Functional Turf

Dedicated Irrigation Meter Premise Delineation



Meter ID	Customer Name	Meter Service Address
01-012	CITY OF XX	1452 IOWA AVE
01-000	CITY OF XX	1422 IOWA AVE
01-202	CITY OF XX	1500 IOWA AVE
01-222	CITY OF XX PARKS AND REC	1486 COLUMBIA AVE
01-876	ABC PROPERTIES	1450 IOWA AVE
01-666	ABC PROPERTIES	1420 IOWA AVE
01-340	CITY OF XX PARKS AND REC	1375 MARLBOROUGH AVE

A premise is a series of meters that are adjacent owned by the same customer



Performance Measures

PERFORMANCE MEASURES

In-Lieu Tech

- \geq 500,000 gallons of water/year
- Demonstrate improved WUE
- Companion water management practices required

✓ Qualitative Reporting

CII BMPs

- 5 BMP categories
- Classification required
- Top users targeted with BMPs
- NFT Ban

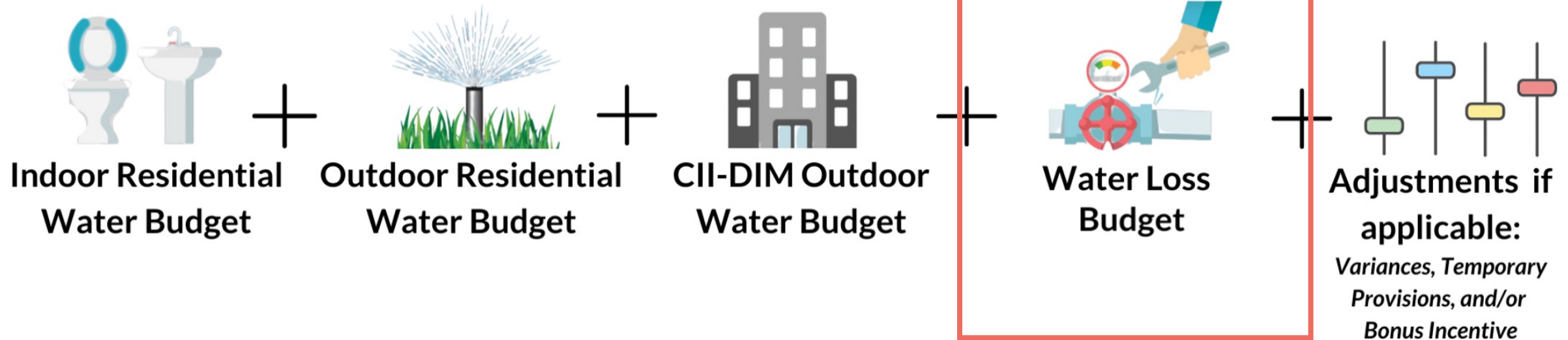
✓ Qualitative Reporting

Mixed Use Meters (MUMs)



Calculating the Urban Water Use Objective

Providers cannot exceed the SUM of the standards



Water Loss Standard

The standard for water loss due to leaks in the water system pipes is based on a real loss standard of gallons per connection per day.

Key Points

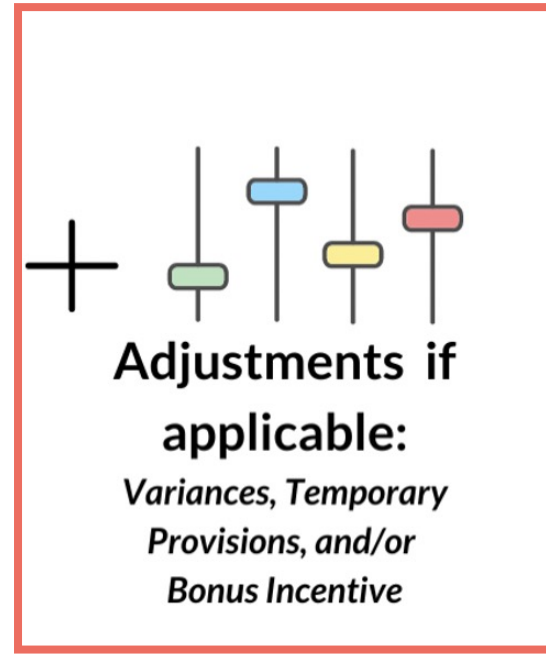
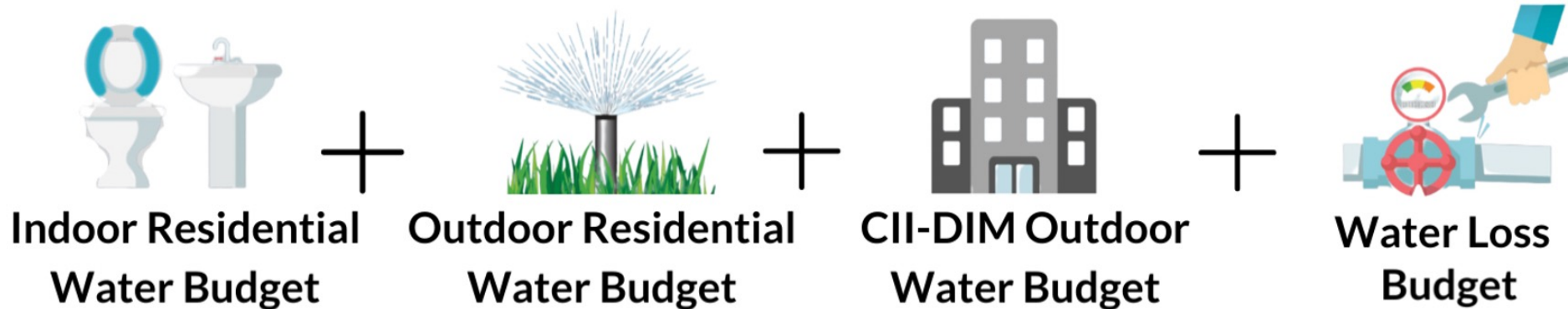


Review your inputs: Suppliers can submit changes to model inputs for approval from SWB to modify target. If you have a reduction required, we recommend you take this step.

SB 555: The State Water Board can enforce the water loss target independently of the overall water use objective.(But not at the same time!)

Calculating the Urban Water Use Objective

Providers cannot exceed the SUM of the standards



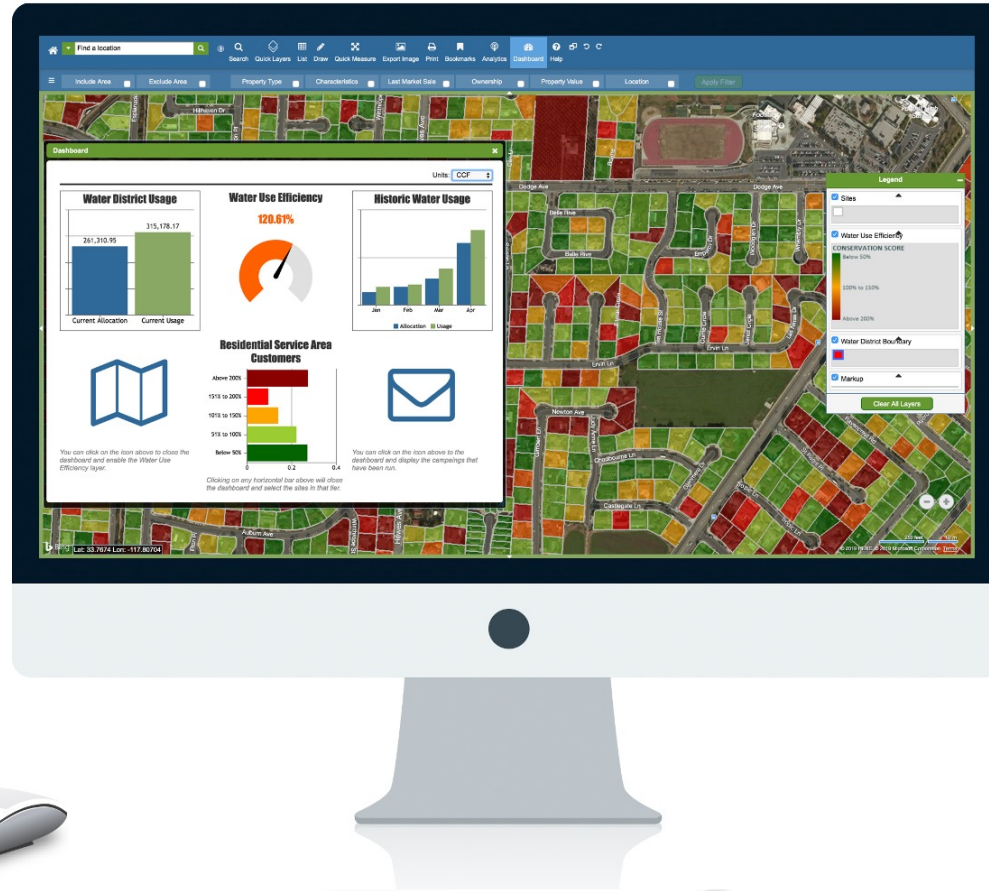
Reporting – 1st report DUE JAN 1st 2024

An urban retail water supplier shall submit an **Annual Water Use Report** to DWR that includes:

- ❑ Urban Water Use Objective (UWUO)
- ❑ Actual urban water use
- ❑ Documentation of the implementation of the **performance measures** for CII water use
- ❑ Description of the **progress made** towards meeting the urban water use objective
- ❑ Validated water loss audit report

WATERVIEW

Water Efficiency Software



THANK YOU



QUESTIONS

Jazmine Molloy

Director of Product Development
Eagle Aerial Solutions

(714) 754 - 7670 ext 700
Jmolloy@ eagleaerial.com