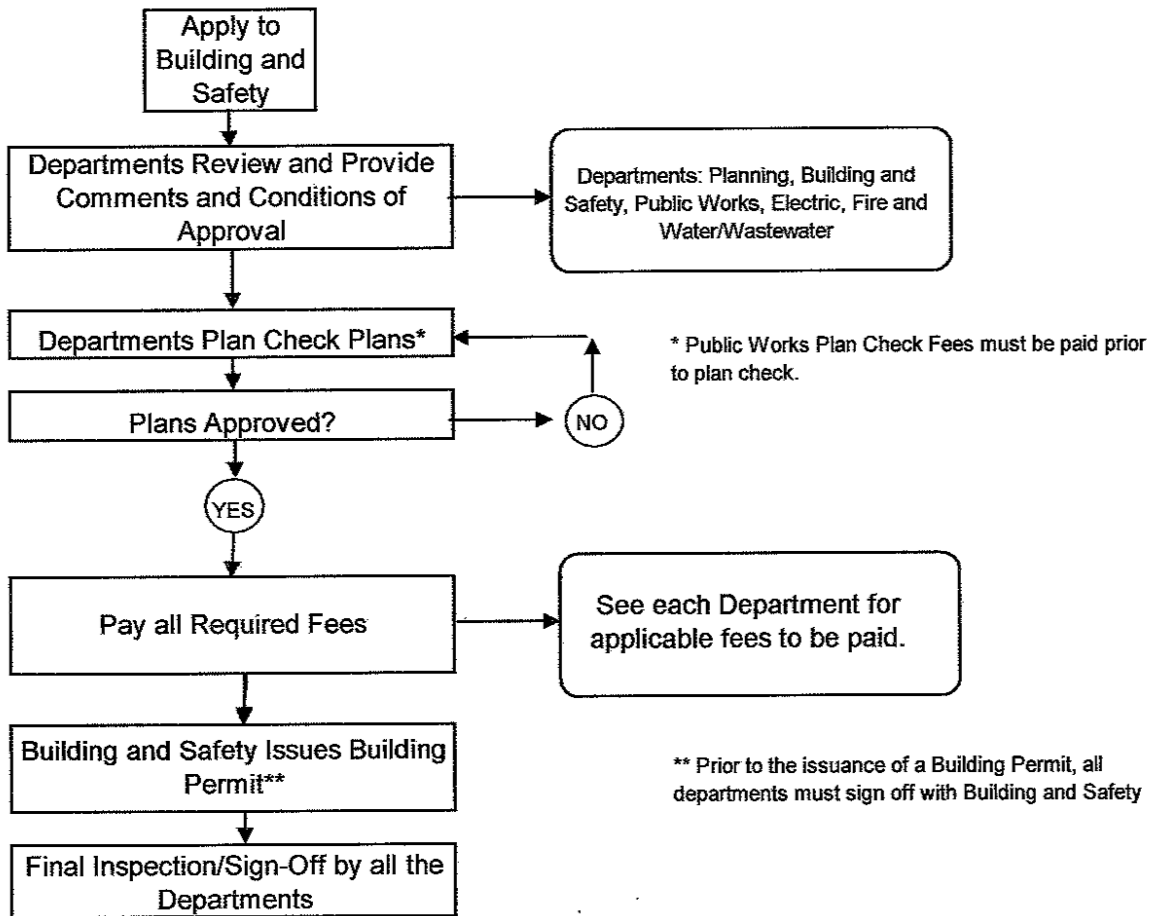




**DEVELOPMENT FLOW CHART FOR  
NEW SINGLE FAMILY DWELLINGS  
AND ROOM ADDITIONS**



**CONTACTS:**

Building/Safety = (951)922-3120

Planning = (951) 922-3125

Public Works = (951)922-3130

Electric = (951)922-3260

Water/Waste Water = (951)922-3281

Fire = (951)922-3210